

# Millburn

## March 2013 Market Snapshot

Units	Address	Style	Bedrms	Baths	DOM	Final List Price	Sales Price	SP:FLP	Actual DOM	Original List Price	SP:OLP	Total Assessment	SP:AV
1	66 Milton Street	Colonial	3	1	56	\$495,000	\$465,000	93.94%	56	\$510,000	91.18%	\$362,100	1.28
2	47 Myrtle Avenue	Colonial	3	1	35	\$500,000	\$575,000	115.00%	35	\$500,000	115.00%	\$686,000	0.84
3	514 Wyoming Avenue	Colonial	4	2	32	\$718,000	\$718,000	100.00%	216	\$699,000	102.72%	\$569,100	1.26
4	133 Cypress Street	Colonial	5	2	1	\$719,000	\$650,000	90.40%	1	\$719,000	90.40%	\$896,500	0.73
5	14 River Lane	Colonial	4	3	23	\$799,000	\$770,000	96.37%	197	\$879,000	87.60%	\$700,300	1.10
6	80 Linden Street	Victrian	4	2	28	\$929,000	\$850,000	91.50%	404	\$1,150,000	73.91%	\$692,500	1.23
AVERAGE					29	\$693,333	\$671,333	97.87%	152	\$742,833	93.47%		1.07

### CURRENT **"ACTIVE"** LISTINGS IN MILLBURN

Number of Units: 15  
 Average List Price: \$595,467  
 Average List Price to Assessed Value Ratio: 1.12  
 Average Days on Market: 46

### CURRENT **"UNDER CONTRACT"** LISTINGS IN MILLBURN

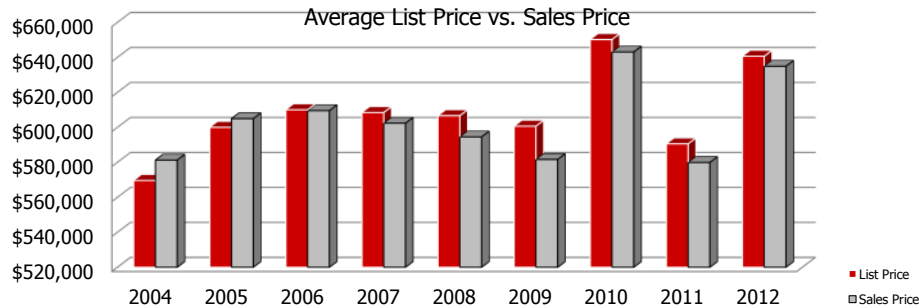
Number of Units: 19  
 Average List Price: \$669,095  
 Average List Price to Assessed Value Ratio: 1.11  
 Average Days on Market: 31

# Millburn 2012 Year to Date Market Trends

March 2012 YTD  
**AVG YTD Sales Price: \$447,738**  
**DOM: 41**  
**#Units YTD: 8**  
**SP:AV 0.95**

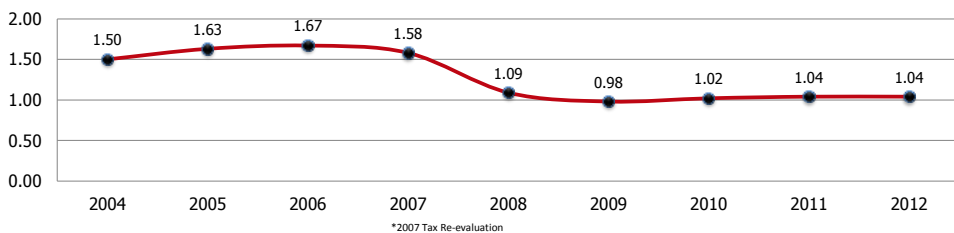
	January	February	March	April	May	June	July	August	September	October	November	December	YTD AVG
Days on Market	49	19	29										38
Final List Price	\$633,375	\$796,000	\$693,333										\$676,187
Sales Price	\$621,125	\$898,500	\$671,333										\$674,625
Sales Price as a % of FLP	98.19%	110.21%	97.87%										99.57%
Actual DOM	69	19	152										94
Original List Price	\$712,000	\$796,000	\$742,833										\$734,062
Sales Price as a % of OLP	90.45%	110.21%	93.47%										94.05%
Sales Price to Assessed Value	1.05	1.26	1.07										1.09
# Units Sold	8	2	6										16

## Millburn 2004-2012



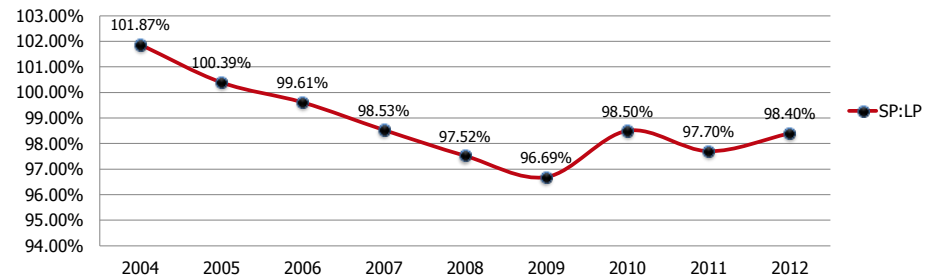
	2004	2005	2006	2007	2008	2009	2010	2011	2012
LP	\$569,609	\$599,980	\$610,041	\$608,441	\$606,636	\$600,629	\$650,173	\$590,527	\$640,603
SP	\$581,274	\$604,983	\$609,523	\$602,349	\$594,510	\$581,626	\$643,078	\$579,916	\$634,919

### Sales Price to Assessed Value Ratio

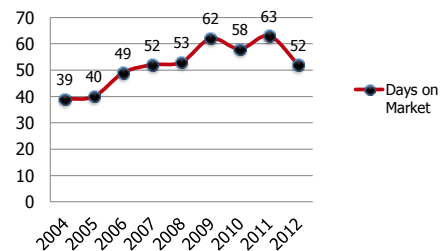


## Millburn 2004-2012

### 2004-2012 Sales Price to List Price Ratios



### 2004-2012 Average Days on Market



### 2004-2012 Number of Units Sold

